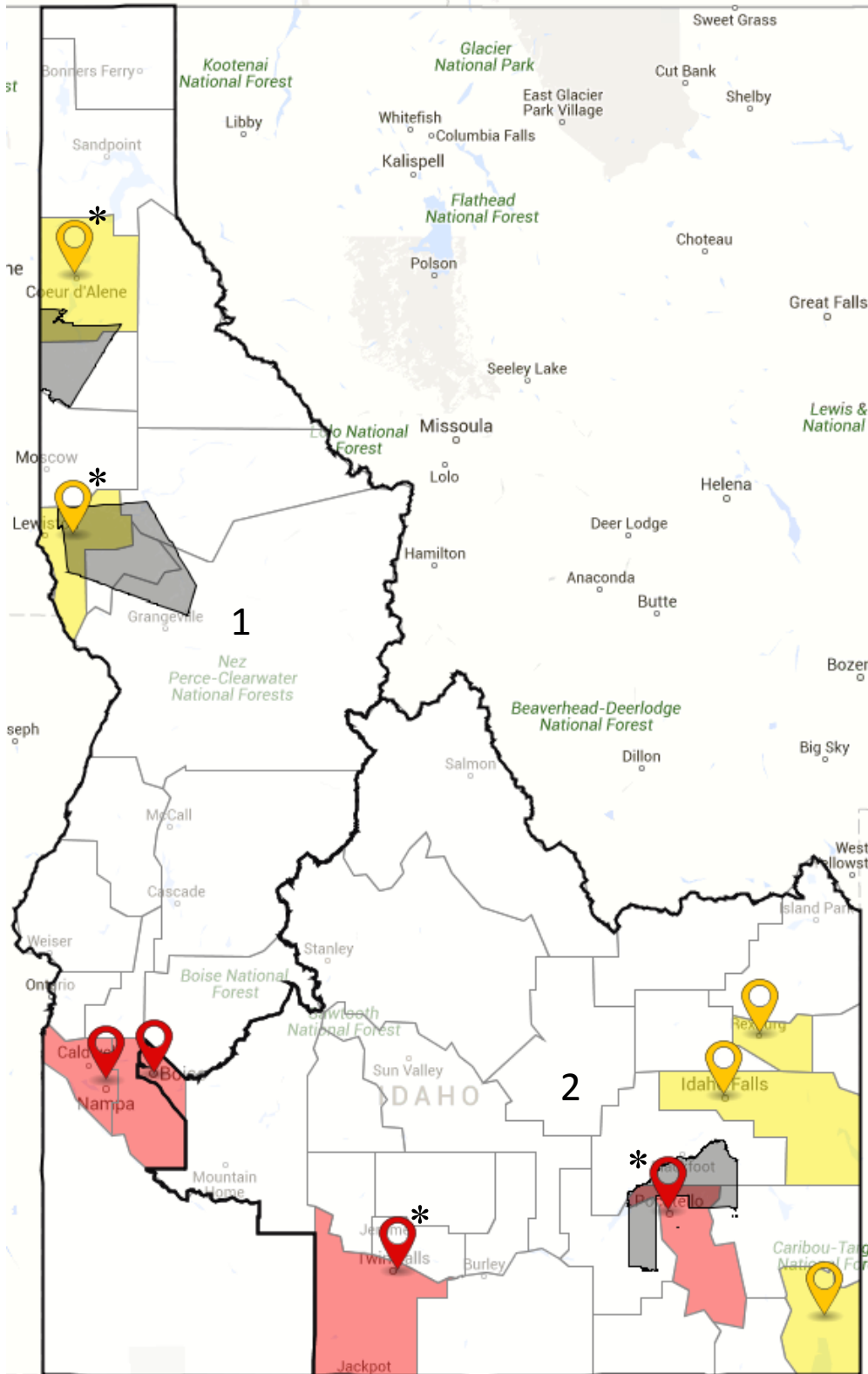


Idaho Children's Advocacy Centers

CAC Locations, Coverage Areas by NCA Membership Status Level, Congressional Districts



National Children's Alliance Membership Status



Accredited Member



Non-Member CAC/MDT



County Served by an Accredited CAC



County Served by a Non-Member CAC/MDT



Borders of a Tribal Community/Reservation served by a CAC



* CAC provides services to a tribal community, see coverage box below for more information.



Congressional District

9% of Counties (4 of 44) are Covered by NCA Accredited Members

Additional Coverage:
11% (5) Counties are Covered by Non-NCA-Member CACs

The Shoshone-Bannock Tribes at the Fort Hall Indian Reservation are served by CACs in Pocatello and Twin Falls

The Coeur D'Alene Tribe is served by the North Idaho CAC in Coeur d'Alene

The Nez Perce Tribe is served by The Nez Perce Tribe CARE Center in Lapwai.

Idaho Network of Children's Advocacy Centers



NATIONAL CHILDREN'S ALLIANCE®